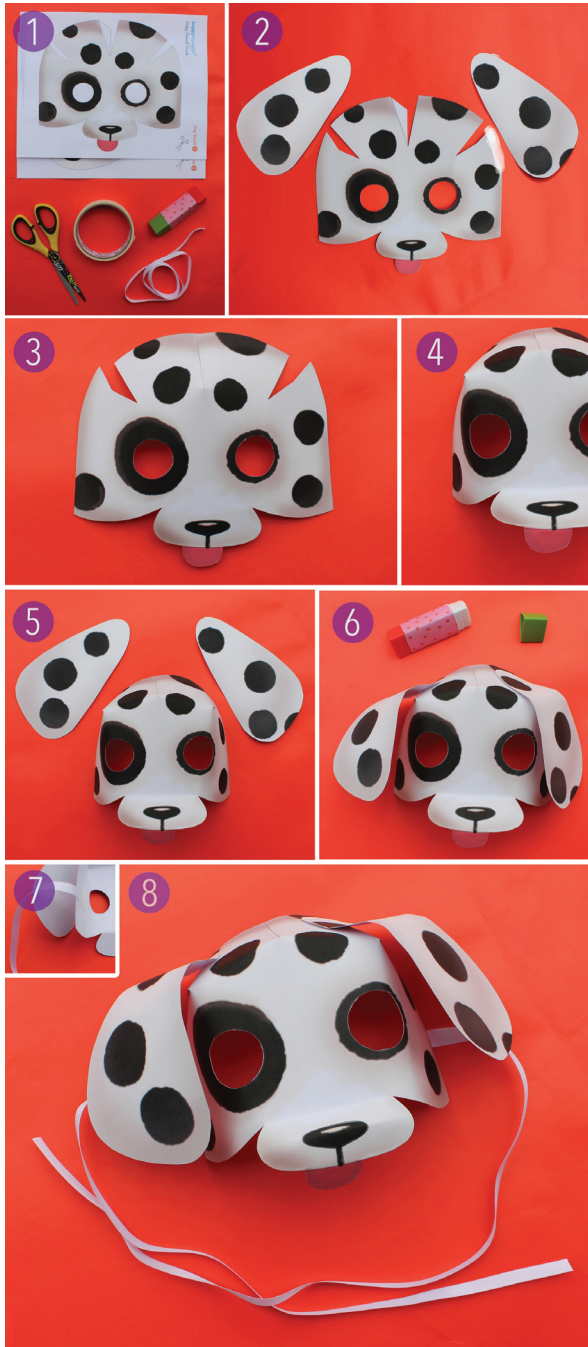




# Dog Mask

## How to make your Dog Mask



### Step 1

You will need scissors, a glue stick, masking tape and some ribbon. For a longer lasting mask, print your template on to a slightly heavier stock paper.

### Step 2

Carefully cut out the mask, ears and eye holes.

### Step 3

Glue the middle panels together with your glue stick and secure on the back with a little masking tape.

### Steps 4

Next stick the two side panels together as shown.

### Step 5

Now to add the ears.

### Step 6

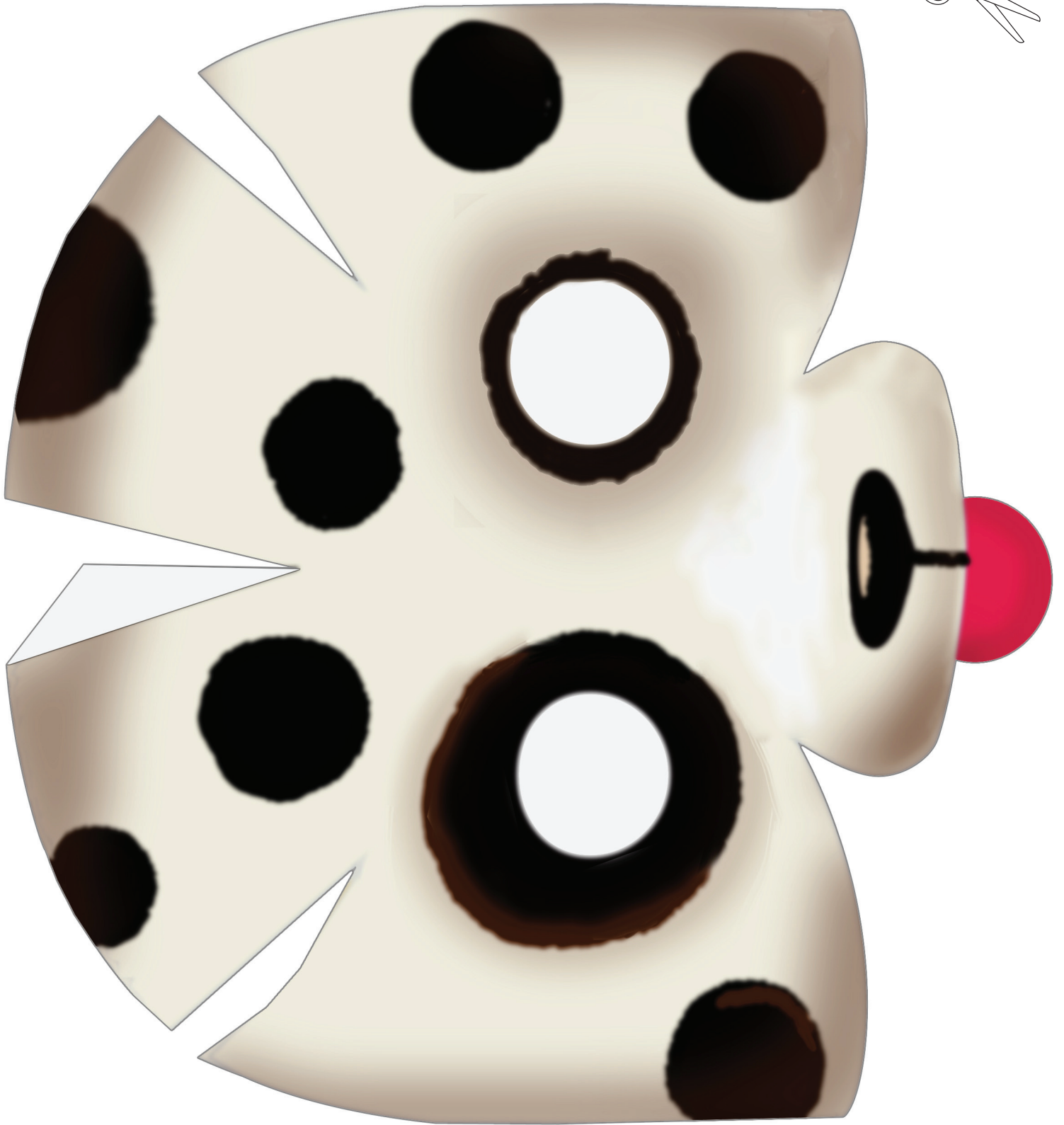
Glue ears in place on the top of the mask as shown.

### Step 7

Fold forward the dog's nose.

### Step 8

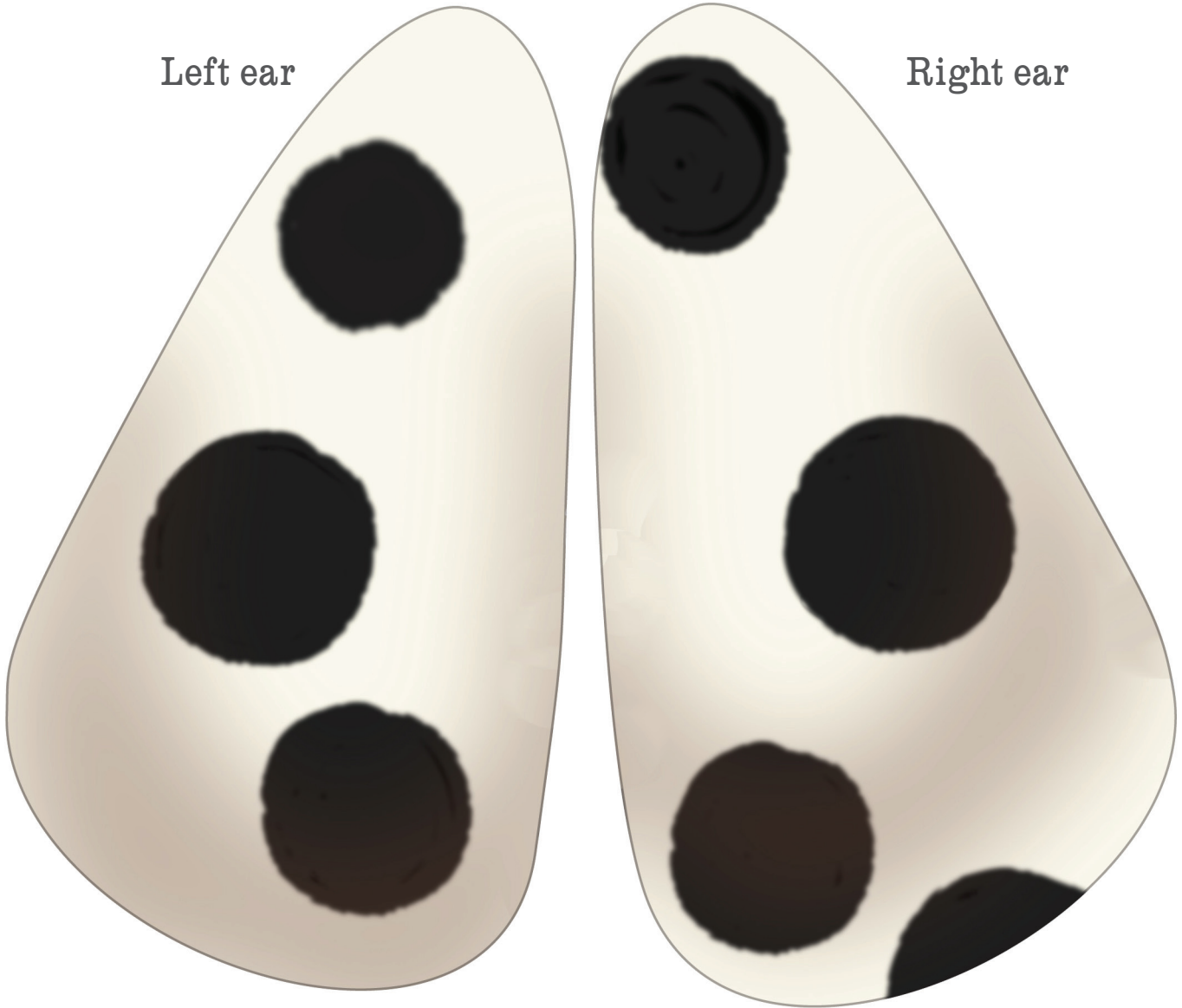
Woof woof! Your dog mask is ready to wear!





Left ear

Right ear





# Happy Animal Friends | Cat Mask



## How to make your Cat Mask

### Step 1

You will need scissors, a glue stick, masking tape and some ribbon. For a longer lasting mask, print your template on to a slightly heavier stock paper.

### Step 2

Carefully cut out the cat mask, whiskers and eye holes.

### Step 3

Glue the middle panels together with your glue stick and secure on the back with a little masking tape.

### Step 4

Next stick the two side panels together as shown.

### Step 5

Now glue the whiskers to the front of the mask.

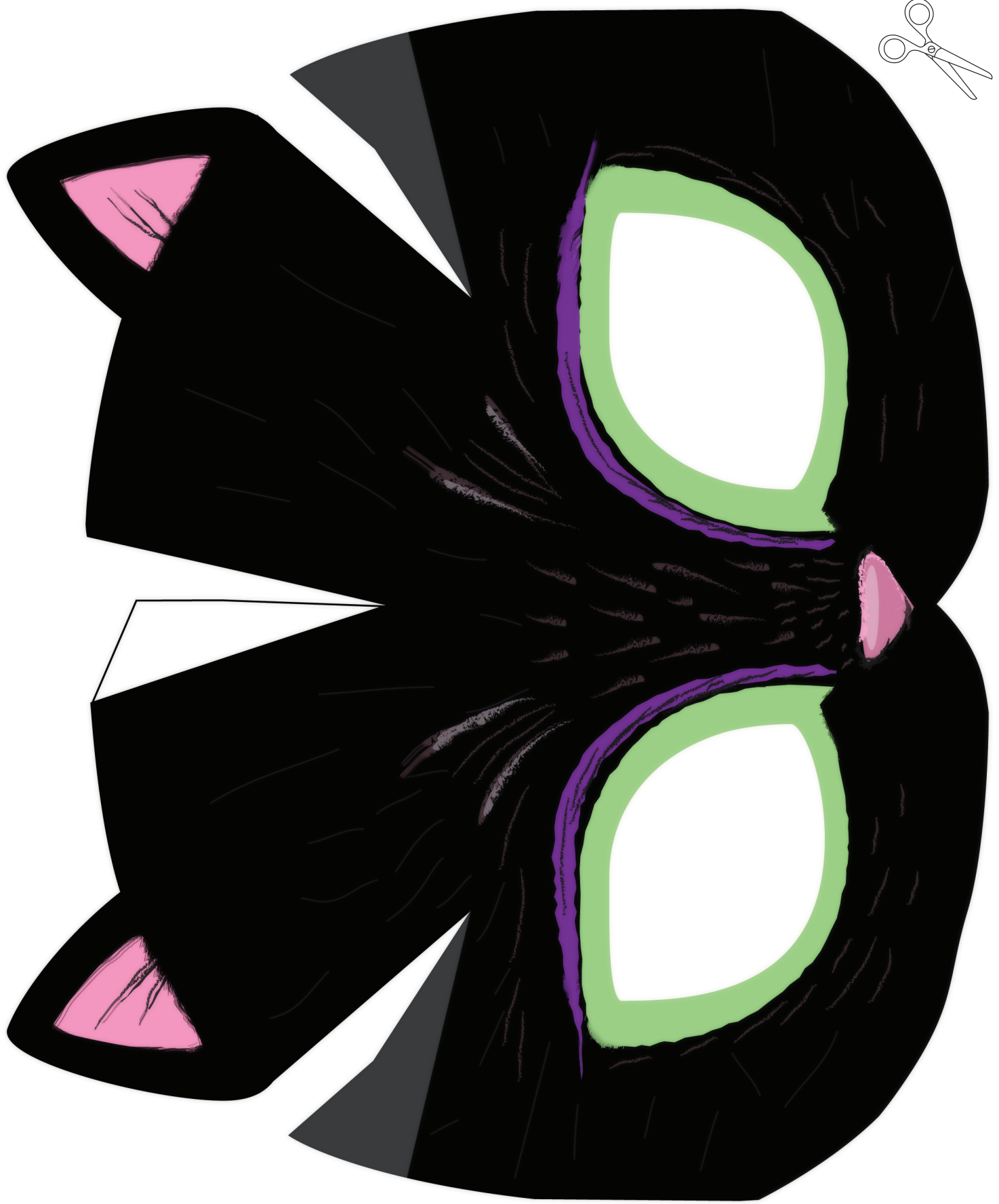
### Step 6

Attach a length of ribbon to either side of your mask. You can glue it in place, then stick with masking tape for a really firm hold.

### Step 9

Meow! Your cat mask is ready to wear!







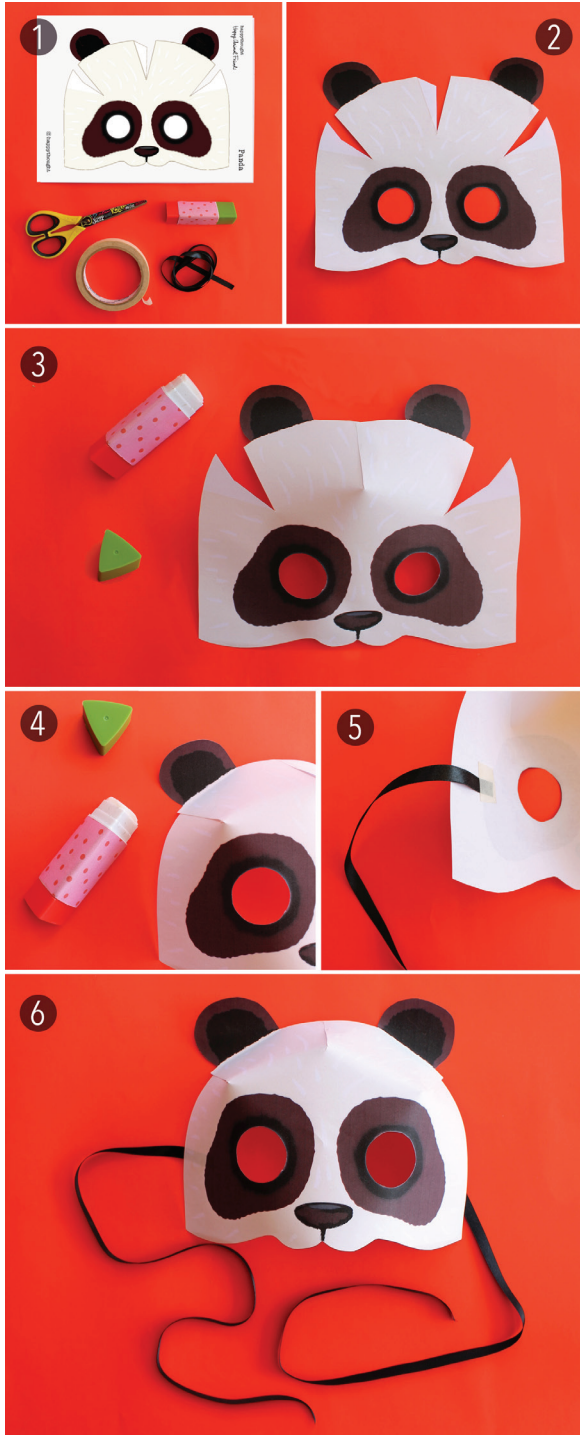
Whiskers





# Panda Mask

## How to make your Panda Mask



### Step 1

You will need scissors, a glue stick, masking tape and some ribbon. For a longer lasting mask, print your template on to a slightly heavier stock paper.

### Step 2

Carefully cut out the mask, ears and eye holes.

### Step 3

Glue the middle panels together with your glue stick and secure on the back with a little masking tape.

### Step 4

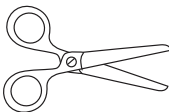
Next stick the two side panels together as shown.

### Step 5

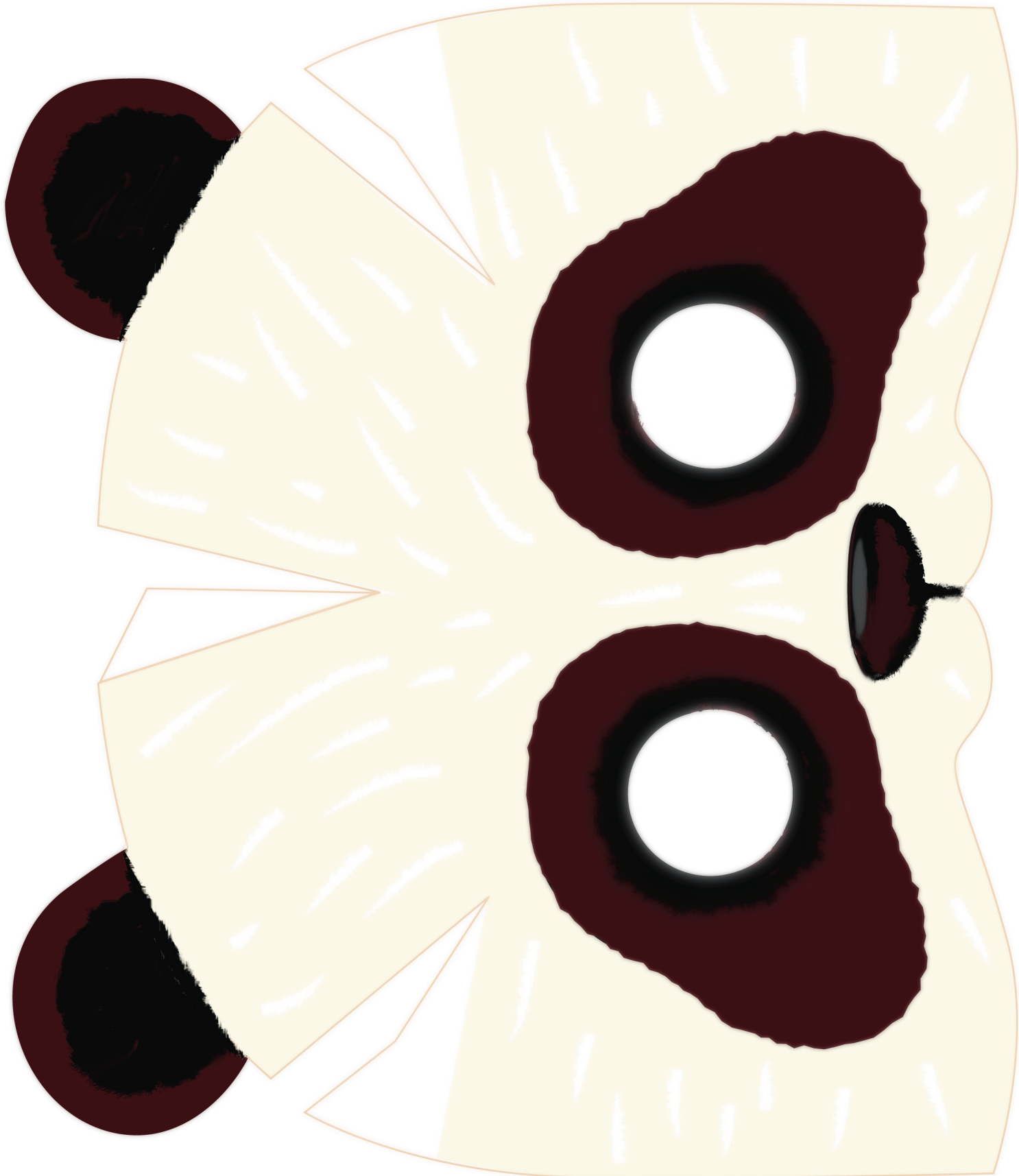
Attach a length of ribbon to either side of your mask. You can glue it in place, then stick with masking tape for a really firm hold.

### Step 6

Awww! Your panda mask is ready to wear!



Panda Mask 1







# Tiger Mask

## How to make your Tiger Mask



### Step 1

You will need scissors, a glue stick, masking tape and some ribbon. For a longer lasting mask, print your template on to a slightly heavier stock paper.

### Step 2

Carefully cut out the mask, ears, whiskers and eye holes.

### Step 3

Glue the middle panels together with your glue stick and secure on the back with a little masking tape.

### Steps 4

Next stick the two side panels together as shown.

### Step 5

Now to add the whiskers.

### Step 6

Attach a length of ribbon to either side of your mask. You can glue it in place, then stick with masking tape for a really firm hold.

### Step 7

Roaaar! Your tiger mask is ready to wear!

# Tiger Mask 1





Whiskers







# HOW TO MAKE YOUR MASK:

1. Print out the template. You will also need scissors, a glue stick, masking tape and some string or ribbon.

2. Cut out your template. If you like you can add some glitter and sparkles to your mask.

3. Stick the two side panels with masking tape on the back of the mask as shown.

4. Glue the middle panels together with a glue stick. Secure on the back with masking tape.

5. Attach a length of string or ribbon on either side of your mask, or a stick to use as a photo prop.

6. Hooray! Your mask is ready. You are now a Luchador!

